

ANCIENT SANSKRIT ALIENS

Profound consequences await thousands of misguided cases incorrectly categorized as Hollywood type “grey encounters;” precariously discarded as hallucinations by so called experts who have not had such an experience. Freeing one’s somatic domain of sci-fi clutter is the simplest way to eidetic memories. Once our minds are free of useless aberrations we are, “able to recall or reproduce things previously seen with startling accuracy, clarity, and vividness.”

*“Linguistic
Determinism”
Anatomy of the
Human Grey Body:
Grey Anatomy
by G. N. O. O’Dell*

ANCIENT SANSKRIT ALIENS

“Anatomy of the Human Grey Body” illustrates the subtle features of extraterrestrial anatomy from true accounts. This text is not intended to show a wide range of different life forms that may inhabit the millions of suitable worlds just like our own. The approach in these few pages is an illustration of the most common variety which commonly appear in the bedroom after waking from a deep sleep; unduly labeled “Greys.” Extraterrestrial visitation is not a new age phenomenon, nor should all encounters be discarded as hallucinations by so called experts who have not had such an experience.

Ancient Sanskrit text and other historic records account for these experiences in great detail. These elaborate stories have survived the rise and fall of many empires culminating to today’s Roswell-era extraterrestrial alien encounters. It is of no consequence if these beings are described as angels, sprites, or aliens; most encounters bear striking similarities that are too descriptive to be anything less than real.

The similarities also create absurdities in regard to place, time, and nature of the encounter which is typically in the bedroom at some twilight hour in the presence of a being not of this world. The logistics of boarding an alien craft too big for the bedroom door or trying to rationalize how the humanoid got into a bedroom without a key in the first place are just a couple of categorical reports that make some of these stories unbelievable.

Real accounts from credible sources also deteriorate because of the determinant nature of natural languages. Language, any language, has a tendency to migrate over time to the complex- away from truth. Cultural definitions neutralize genuine extraterrestrial experiences with false somatic holograms such as Hollywood “grey” encounters rooted deep inside human consciousness by television and many other multimedia channels. Sadly, these genuine experiences are natural occurrences and are usually meant to improve the wellbeing of the so called victim.

The term “grey” is now a household word with fixed features. These traditional characteristics determine what a grey type alien must look like and how a grey must act—deluding the memories of actual experience. The point is that little, if nothing, can we imagine on our own; most of what we hold true is actually pre-determined by traditional definitions.

Many people advocate for free speech; however, few ever consider the choices they make could be predetermined by their own language. The way we think is vastly influenced by our own inner talk. What we say to ourselves in the quiet of our minds can and does determine how we understand. If by linguistic relatively, our language restricts self-expression, then it makes good sense; the way we talk to ourselves also restricts the way we think. Most importantly, what we say to ourselves today controls our very actions.

It’s of no consequence that our ease to interpret one language to another is rooted in some universal or a lineage of antiquity to a common great-grandmother: What we say to ourselves today controls our very actions. Inner Talk, what we say to ourselves in the quiet of our minds is the way humans understand. If we analyze the essential features of the way we speak and the way we think, we can easily identify and redefine words or phrases of a particular cultural emphasis which predetermine our opinions. In other words, by applying a few principals of Linguistics, the way we speak, to the way we think, we can, with little effort, loosen the bonds of cultural control, guaranteeing our right to freely reason on our own. Thus, to think freely is to refine our “inner talk” by redefining words or phrases that have bred false beliefs such as the term ‘grey.’



<http://linearism.org/images/LeavingRoswellNewMexicoBIN.jpg>

Fig 1 Leaving Roswell New Mexico

We all praise rationality but seldom do we apply the same criteria in the quiet of our own minds. In my own case, the word “grey” has been redefined after a sudden realization that the term grey is synonymous to “jivatma” a Sanskrit term used to describe extraterrestrial encounters as etched on ancient clay tablets (Figure 002). Grey encounters are not a “new age” phenomena as plotted on the traditional Roswell New Mexico timeline, marked by the reported UFO crash of 1947.

Ancient religions clearly account for the existence of these entities, but have been put off by nineteenth century Christian Linguist as dogmatic primitive myths. This wave of “Stone Age” religious intolerance still causes havoc today as embedded linguistic determinates. More specifically, the Hindu term atman, or jivatma, has historic importance as evidence of the existence of these beings. Conversely, what is viewed as greys in the west and viewed as jivatmas in the east are in fact synonymous terms. Unfortunately, both positions are considered credulous by the determinate nature of complex languages.

Countless pages of ancient as well as contemporary text describe the jivatma, soul, or agent as the personification of individual experience in the material world. The jivatma body or etheric body lives for eons and is the only semi-permanent body of awareness after the death of the human body, most notably bodies. The etheric body is a common term for the etheric plane of action from which the jivatma operates. This pluralist view of multiple bodies is shared by Christian, Hebrew, and Islamic faiths as well as the majority of worldly religions.

Any view that includes a human body and a separate heavenly soul body share the pluralist view of multiple bodies. The heavenly afterlife in which the soul dwells is also a belief in multidimensional planes. It seems odd to justify what is commonly understood as true; however, the determinants of language begs complex explanations to arrive at the same simple truths.

Hinduism as well as many other eastern religions describes the jivatma or grey as an individual personification of the self as countless lives of transmigration are born and die in different states of reincarnation. Therefore, grey type experiences are not in every case alien to those that report the encounter and are in some cases themselves, respectively. However, it makes good sense to evaluate these reports as viewed from first person, the physical body. Although, the attributes of the “grey” body seem immensely complex, it is best to view the experience just as it is without complex metaphysical explanation or science fiction absurdities.

A contribution to the body of knowledge in regard to the purpose and actions of jivatma bodies seems fruitless because of the intense historic evidence describing the jivatma are readily available in libraries and electronic text. Western explanations typically describe extraterrestrial visitations as aliens from “outer space” while in the east, jivatma experiences relate to “inner space”. Although volumes of information have been written explaining the purpose of the jivatma body, illustrations are lacking or nonexistent. “Anatomy of the Human Grey Body” illustrates what a human grey body actually looks like, and why greys look the way they do.



<http://linearism.org/images/GreyAlienShadowBoxBIN.jpg>

Fig 2 Grey Alien or Jivagrey Shadow Box

Conversely, medical authorities try to account grey type bedroom experiences as phantoms of sleep paralysis. Typically the patient describes a visual experience; whereas, the patient has lost all control of bodily movements including speech. It is misleading to lump all alien encounters into this unexplored area, even though the symptoms are very similar. It would be just as misleading and dangerous to lump all sleep paralysis episodes as alien encounters, some of which can be signs of serious medical conditions.

Unfortunately and very possibly, patients suffering from serious medical ailments that include symptoms of sleep paralysis have been grouped with healthy patient populations reporting "alien encounters", jeopardizing medical prognosis and research. Grey encounters can happen before, during, and after the condition of sleep paralysis. It is safe to say from my own childhood experience that many reported adult episodes of sleep paralysis also happened at an earlier adolescence age. If the majority of children of my own age did talk about sleep paralysis syndrome on a regular basis, then quite possibly "sleep paralysis" is misidentified as a catch-all prognosis.

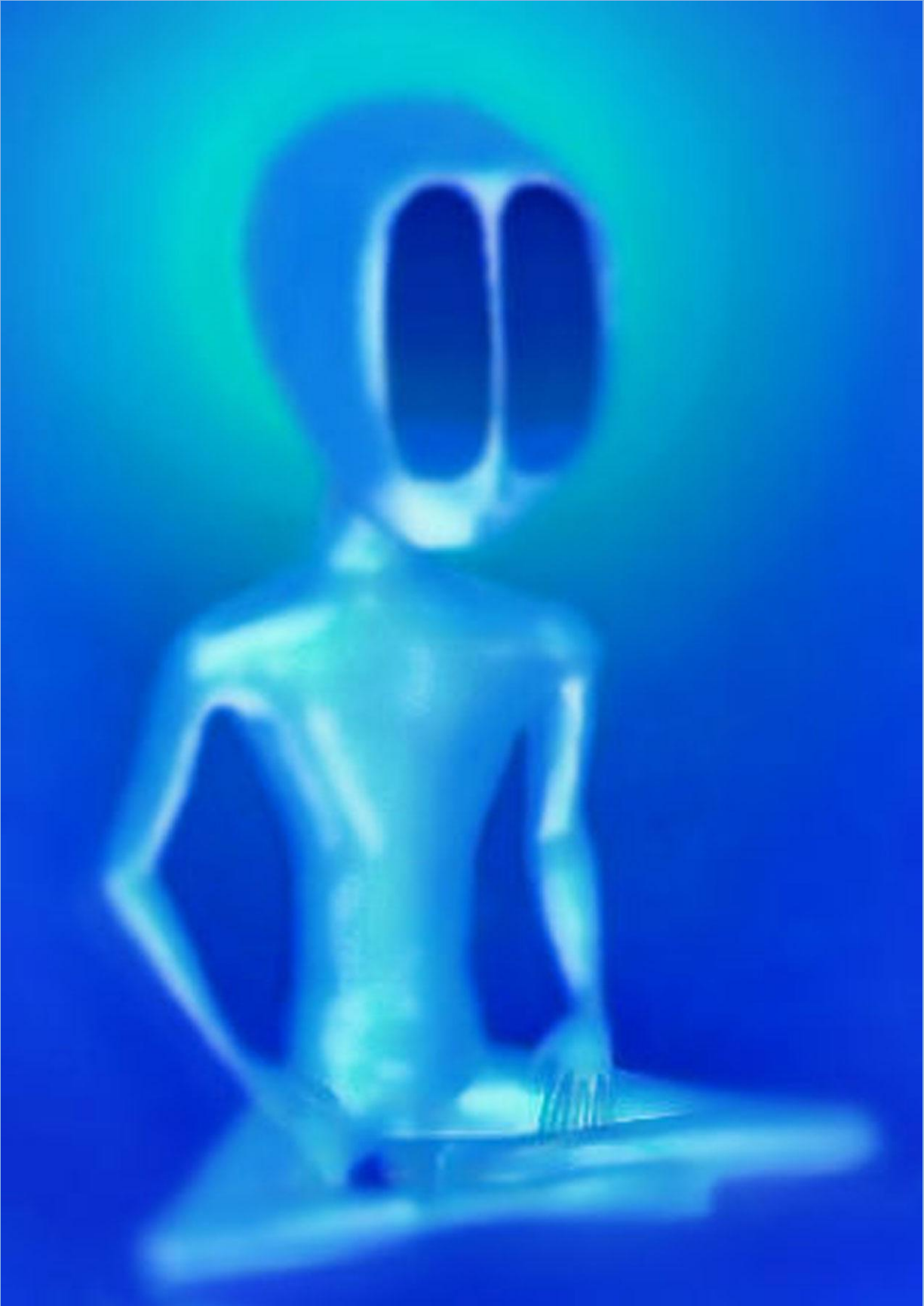
Extraterrestrial experiences while sleeping occur during a subliminal period psychologist call the unconscious, or more ideally, a higher level of 'conscious' awareness. Seemingly, realism and idealism fail to give good answers for grey type phenomena. In order to understand the physics, and nature of these beings, one must actually move into, and move about in the same consciousness awareness of their nighttime guest. This "moving into" is a natural state of human consciousness synchronized to the twilight moment of the experience.

The alien experience of the bedroom variety coined "grey's" are categorical of multidimensional type entities, or beings bearing several or different bodies that correspond to the dimensions from which they operate. This is not to say that greys are just fathoms or spirits for aliens of this category are certainly the most capable intellects of quantum physics or any other sciences including those beyond our most current technologies. Intergalactic travel by craft, instrument, or wave is neither beneath nor beyond their capabilities.

Just as the most advanced technologies of earth are guarded from the profane, so too exists an extraterrestrial type hierarchy of command. This higher court resembles a platonic monarchy based on experience and service. This all-volunteer force oversees and protects many seed colonies such as earth from disturbances caused by careless or in some rare cases aggressive alien clans, or genera.

This complex power system is baffling to the westerner whose idea of an alien has been corrupted by multimedia grey fantasy such as my own case. My previous mental picture of understanding or somatic domain, split the terms "grey" and "jivatma" into separate categorical universes rendering a common false belief: "East is east, and west is west; the twain shall never meet."

Profound consequences await thousands of misguided cases incorrectly categorized as Hollywood type "grey encounters;" precariously discarded as hallucinations by so called experts who have not had such an experience (Figure 3). Freeing one's somatic domain of sci-fi clutter is the simplest way to eidetic memories. Once our minds are free of useless aberrations we are, "able to recall or reproduce things previously seen with startling accuracy, clarity, and vividness (Microsoft)."



<http://linearism.org/images/BestInTheWestjivatma2009GODellbcd.jpg>

Fig 3 Final Rendering Etheric Jivatma Grey Alien or Jivagrey in 2008

Bibliography

Alien Explosion. Dir. Gregory N. O'Dell Motion Picture Animation. Transpersonal WayStation, 2006

Gray, Henry F.R.S. Anatomy of the Human Body. 29th Rev. ed. Charles Mayo Goss, A.B., M.D. Philadelphia: Lea & Febiger

Microsoft Corporation, Inc. Encarta World English Dictionary [North American Edition]. Seattle: Bloomsburg Publishing
2007

O'Dell, G. N. Classroom discussion on Being and Time, University of Texas at San Antonio January 2007